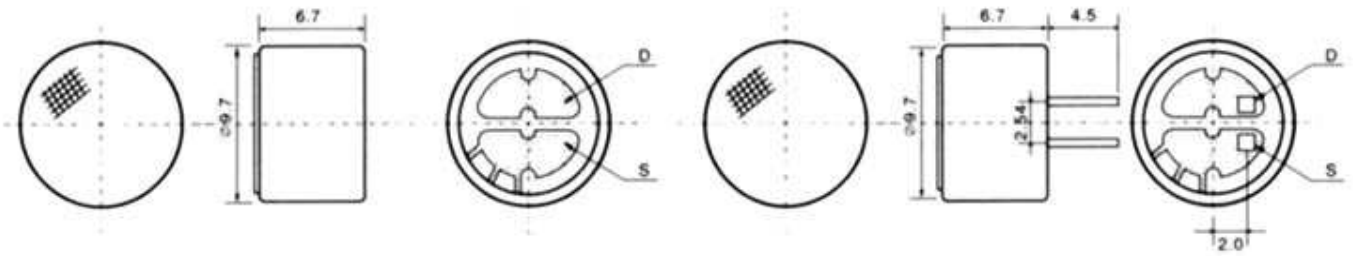


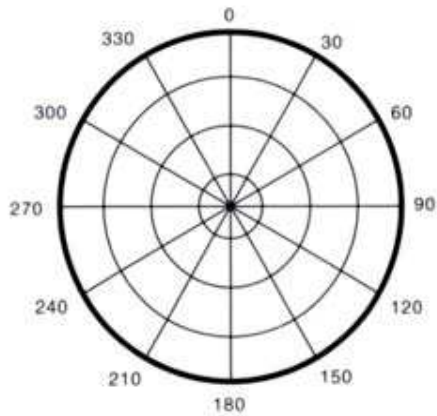


contact:

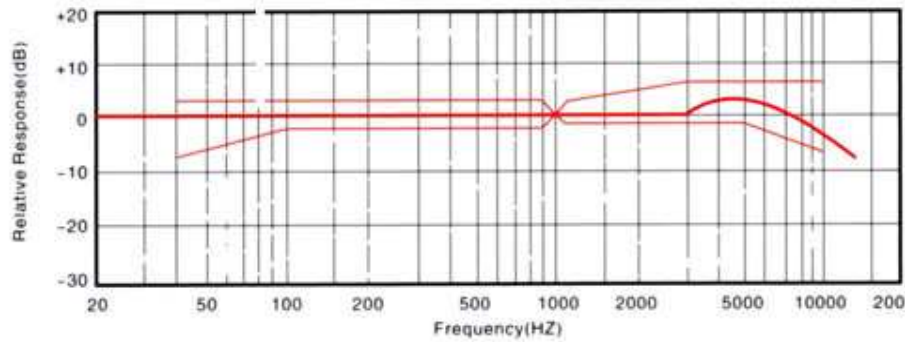
### Dimension Drawing(Unit:mm)



### Polar directivity pattern



### Typical Frequency Response curve



## *Detail Specifications:*

Model No.	DGO9767CD-P		
Sensitivity(0dB=1v/ $\mu$ bar,1KHz)	-30dB ~ -44dB	Operation Voltage(Max./Std.)	4.5V
Impedance	Low impedance(2.2K $\Omega$ -30%)	Resistance(RL):	2.2K $\Omega$
Directivity	Omni-directional	Current Consumption:	Max.0.5.mA
Frequency	20~16, 000Hz	Sensitivity Reduction	Within -3dB at 3V
Max.operation voltage	10V	S/N Ratio	More than 60dB