

DIP Switch Series

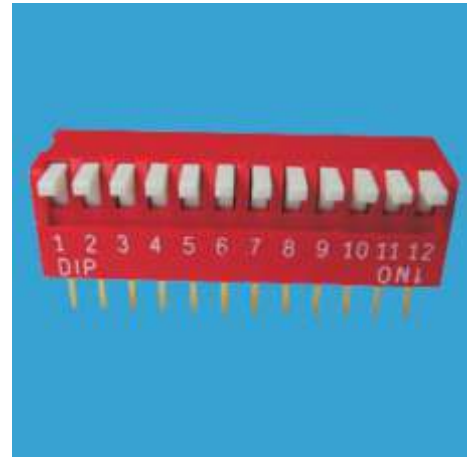
KLS7-DP-Piano Type Dip Switch Series

SPECIFICATIONS

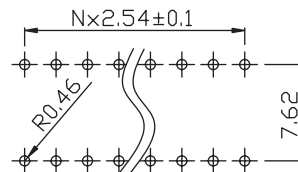
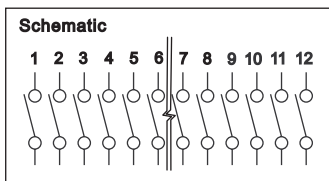
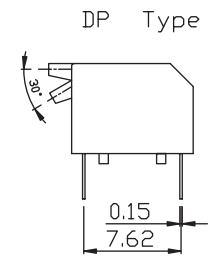
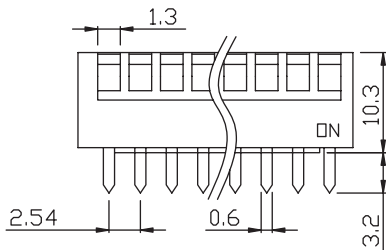
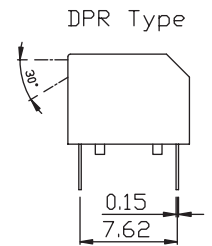
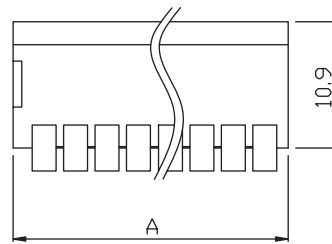
Mechanical life: 2000 operations per switch
 Operation Force : $\leq 9.8\text{N}$ max.
 Stroke:2.0mm
 Operation Temp:-20°C~+70°C
 Electrical life: 2000 operations per switch-24 VDC, 25mA
 Contact Resistance: 50m max. at initial
 Non-Switching Rating: 100mA, 50VDC
 Switching Rating: 25mA, 24VDC
 Circuit: Single pole single throw

Soldering and Cleaning Processes

Keep all switch contacts in their "OFF" position for all operations



Model No.	No. Pos.	A
DP-01	1	4.10
DP-02	2	6.64
DP-03	3	9.18
DP-04	4	11.72
DP-05	5	14.26
DP-06	6	16.80
DP-07	7	19.34
DP-08	8	21.88
DP-09	9	24.42
DP-10	10	26.96
DP-12	12	32.04



PCB LAYOUT

ORDER INFORMATION

KLS7-DP - XX - R - 0 0

Part Number _____
 DP : Bulge Type Dip Switch
 DPR: Recessed Type Dip Switch
 Number of Pos.: 01~12 Pos. _____
 Packaging: 0=Tube 1=Tape
 0: Non-sealed
 1: With sealed
 Color: R=Red B=Blue